

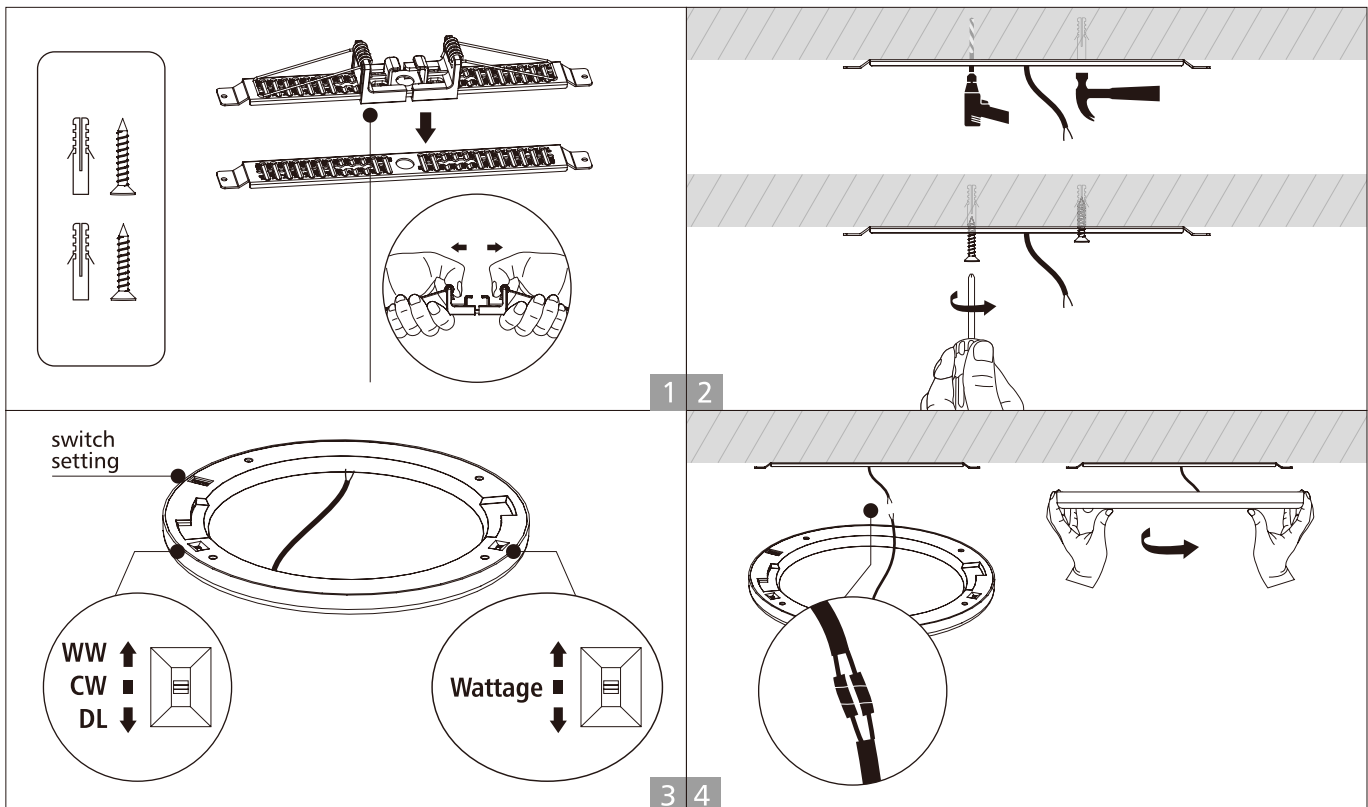


# \*\*\*INSTALLATION MANUAL\*\*\*

## Safety tips before starting

- \*Let always an expert/authorized technician make the installation.
- \*Before you start please shut off the power to prevent electric shock.
- \*The products with energetic class II do not require the Earth / Ground connection so please do not connect the neutral if is not required. Instead, if the item is class energetic I, please do connect the neutral to Earth.
- \*Consider always to leave some space for the heat sink of the led device, it need it to cool down after use
- \*Do not connect any Led device without its recommended driver
- \*Your individual product may vary from the design shown in the pictures
- \*Do not disassemble your product
- \*If any modification is made in the item or any wrong installation cause any damage to it, the warranty will be invalidated.

## ■ Surface mounted installation

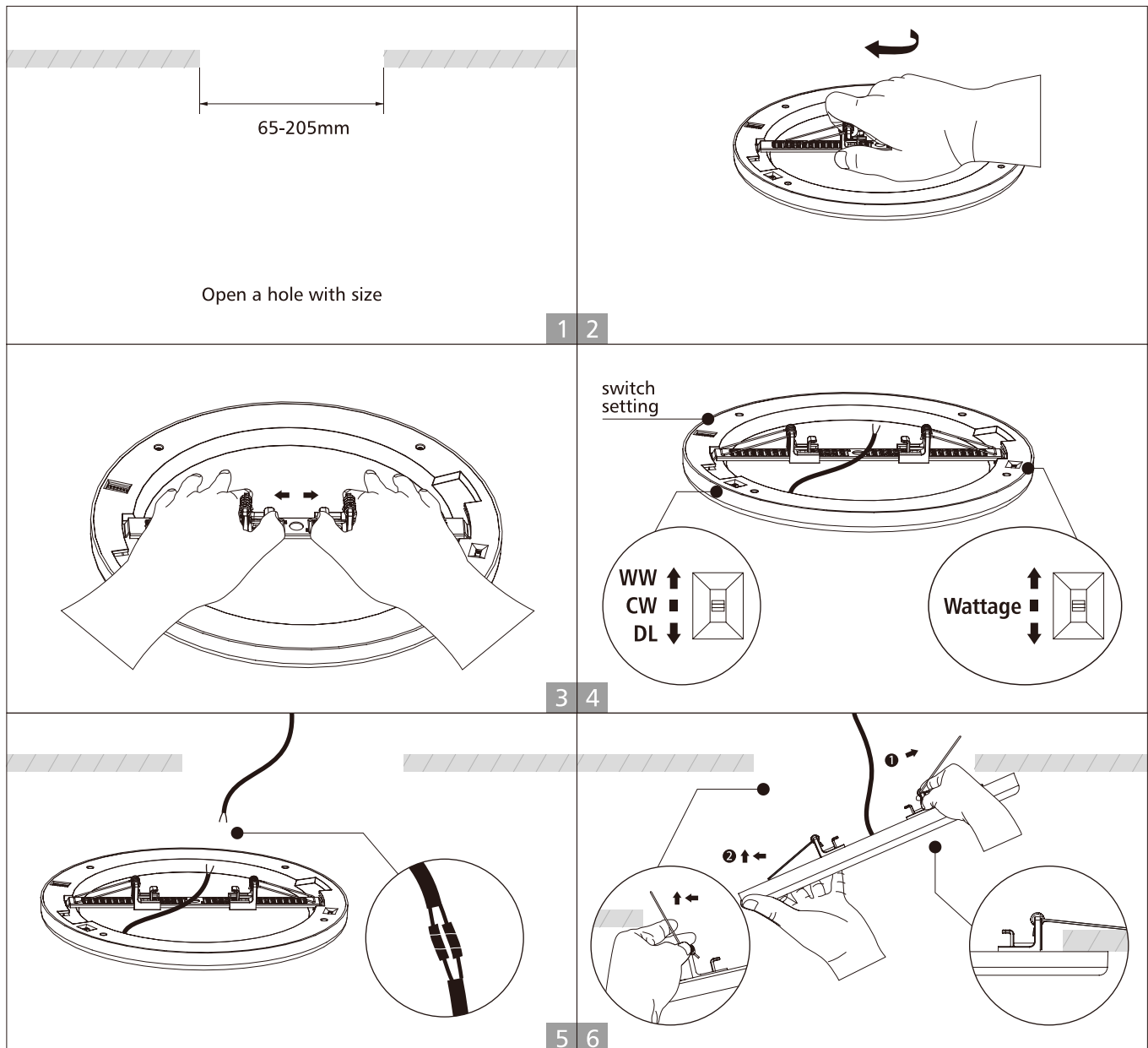


Thanks for your purchase !



# \*\*\*INSTALLATION MANUAL\*\*\*

## ■ Recessed into ceiling



Thanks for your purchase !