

**Objective**

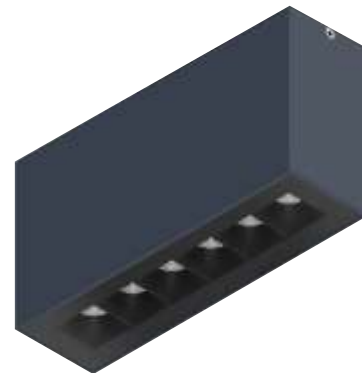
The Minimalist led feature add a touch of elegance for a slim linear body that can easily blend with many styles so that the item can blend in any architectural concept. Outstanding lighting performances combined to narrow beam angle effect and special optical system for high visual comfort make this item an excellence of its category. Black and white Matte high quality powder coating contribute to the refined look. Variety of installation for outdoor ceiling area.

**Obiettivo**

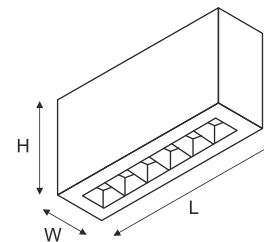
La caratteristica dei led minimalisti aggiunge un tocco di eleganza ad un prodotto dal corpo lineare e sottile che si amalgama alla perfezione con molteplici stili differenti, rendendo così l'articolo compatibile ad ogni concept di design. Le prestazioni illuminotecniche elevate vengono combinate ad un'angolazione acuta dell'effetto di luce e uno speciale sistema ottico integrato che assicura alto comfort visivo, rendendo questo articolo un'eccellenza di categoria. L'alta qualità nella finitura in bianco o nero satinato contribuisce invece a perfezionare l'aspetto raffinato. Varietà di installazione per l'area del soffitto esterno.

**Description**

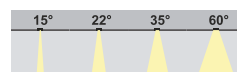
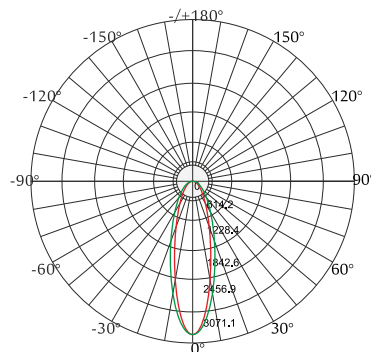
- Housing** - Die cast aluminium powder coated with choice of RAL colors
- Diffuser** - Tempered clear glass diffuser.
- Reflector** - Black aluminum reflector.
- LED** - reducing energy consumption with L80/B10/F10 50,000 hrs lifetime.
- Standards** - manufactured in accordance with tested as per PTPS IEC 62722



CODE	WATTAGE	LUMEN	SIZE mm
5599508	8W	880lm	115 X 46 X 85H
5599512	12W	1320lm	160 X 46 X 85H
5599516	16W	1760lm	205 X 46 X 85H



<b>PHASE DIMMING</b>	DALI	1-10 DIMMING
	Glowing Wire Test - 850°	
IP 66	IK 06	UGR <19
		SDCM 2.0/3.0
<b>COMPLIANCE</b>	LM-78 TM-21 (LF-80)	
PASEL ACCREDITATION	COB	CRI >90
		series wiring
<b>A++</b>	85~265V 50/60Hz	



2700K  
3000K  
4000K



LED Drivers - PHILIPS TRIDONIC | LED Chips - BRIDGELUX PHILIPS Micro HumanTech

In a continuing effort to offer the best product possible, we reserve the right to change, without notice, specifications or materials that in our opinion will not alter the function of the product. Specification sheets found at [www.romaluce.it](http://www.romaluce.it) are the most recent versions and supercede all other printed or electronic versions.