

Objective

Single emission projectors for outdoor application. The super warm to cool LED light source with a narrow, medium, wide spot light distribution is composed of 1 power led LEDs with CCT of 2700 up to 5000 K and a CRI 90; the source luminous flux is max of 1080lm, with a 120 lm/W nominal luminous efficacy. the device body is made of die cast aluminum and features a aluminum finish or powder coated with RAL selection, processed by means of brushing; the diffuser is made of extra glass - tempered with a silk-screening treatment. The ingress protection degree is IP67. MANY power options.

Obiettivo

Proiettori a singola emissione per applicazione esterna. La sorgente luminosa a LED da super calda a fredda con una distribuzione della luce spot stretta, media e ampia è composta da 1 LED a led di potenza con CCT da 2700 a 5000 K e un CRI 90; il flusso luminoso sorgente è massimo di 1080lm, con un'efficienza luminosa nominale di 120 lm / W. il corpo del dispositivo è realizzato in pressofusione di alluminio e presenta una finitura in alluminio o verniciato a polvere con selezione RAL, trattato mediante spazzolatura; il diffusore è in vetro extra temperato con trattamento serigrafico. Il grado di protezione dell'ingresso è IP67. MOLTE opzioni di alimentazione.

Description

Housing - Die cast aluminium powder coated with choice of RAL colors.

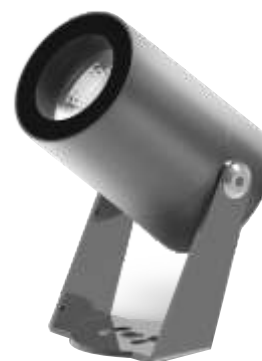
Diffuser - Clear tempered glass or option lens.

Reflector - Anodized specular aluminum.

LED - reducing energy consumption with L80/B10/F10 50,000 hrs lifetime.

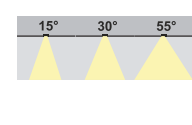
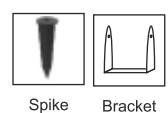
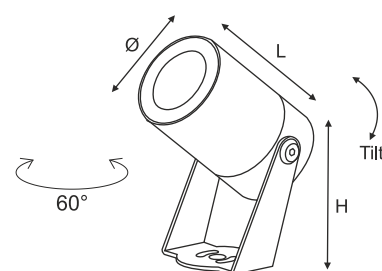
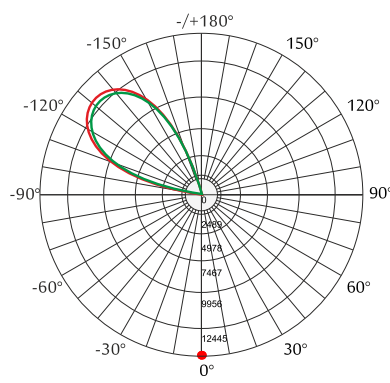
Standards - manufactured in accordance with tested as per PTPS IEC 62722.

Accessories - Stainless steel mounting bracket, spike stick.



CODE	WATTAGE	LUMEN	SIZE mm
2149504	4W	480lm	Ø50 X 80 X 82H
2149506	6W	720lm	Ø50 X 80 X 82H
2149509	9W	1080lm	Ø72 X 98 X 106H

LED	ENERGY STAR	ECO	IP67
PHASE DIMMING	DALI	1-10 DIMMING	IP67
65°C	Glowing Wire Test - 850°	IP 66	IK 06
-20°C	UGR <21	SDCM 2.0/3.0	COMPLIANCE
CIDET	EAC	LM-79 TM-21	LMF-80
PASEL ACCREDITATION	COB	CRI >90	series wiring
ROHS	SELV	F	series wiring
CE	COMPLIANCE	U	DC 24V
A++			



LED Drivers - PHILIPS GTCI MEAN WELL GTCI TRIDONIC LED Chips - BRIDGELUX CREE SHARP SAMSUNG PHILIPS CITIZEN

In a continuing effort to offer the best product possible, we reserve the right to change, without notice, specifications or materials that in our opinion will not alter the function of the product. Specification sheets found at www.romaluce.it are the most recent versions and supercede all other printed or electronic versions.