

**Objective**

Typical bollard light with classic shape. For path way, this item is perfect. The light effect is unique focused to walking area, pleasant in its uniformity and brightness. The high efficiency LED light source is a warranty for saving energy and obtain at the same time excellent performances.

**Obiettivo**

Tipico paletto luminoso dalla forma classica. Per gli amanti della tradizione, questo articolo è perfetto. L'effetto della luce è unico, piacevole nella sua uniformità e luminosità. La sorgente luminosa a LED ad alta efficienza è una garanzia per risparmiare energia e allo stesso tempo ottenere prestazioni eccellenti.

**Description**

**Housing** - High purity die casting aluminum extruded profile manufactured on 800mm as standard length can be customized upon request powder coated with choice of RAL colors

**Diffuser** - Tempered clear glass optical PMMA lens.

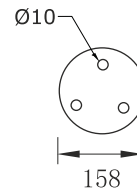
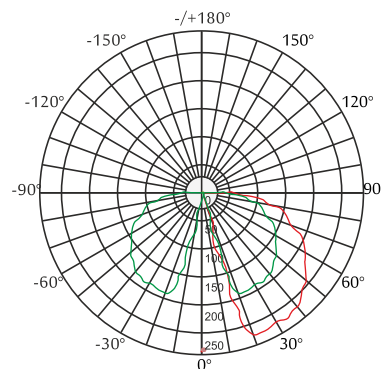
**LED** - reducing energy consumption with L80/B10/F10 50,000 hrs lifetime.

**Standards** - manufactured in accordance with tested as per PTPS IEC 62722

CODE	WATTAGE	LUMEN	SIZE mm
1330208	8W	880lm	Ø158 X 800 H
1330212	12W	1320lm	Ø158 X 800 H



LED	ENERGY STAR	ECO
PHASE DIMMING	DALI	1-10 DIMMING
65°C	Glowing Wire Test - 850°	
-20°C	IP 54	IK 08
UGR <22	SDCM 2.0/3.0	COMPLIANCE LM-79 TM-21 LM-80
CIDET	EAC	
PASEL ACCREDITATION	COB	CRI >90
ROHS	SELV	series wiring
CE	COMPLIANCE	U
A++	220~265V 50/60Hz	



- 2700K
- 3000K
- 4000K
- 5000K
- 6000K
- 6500K



LED Drivers - PHILIPS GTI MEAN WELL GTCI TRIDONIC LED Chips - BRIDGELUX CREE SHARP SAMSUNG PHILIPS CITIZEN

In a continuing effort to offer the best product possible, we reserve the right to change, without notice, specifications or materials that in our opinion will not alter the function of the product. Specification sheets found at [www.romaluce.it](http://www.romaluce.it) are the most recent versions and supercede all other printed or electronic versions.