

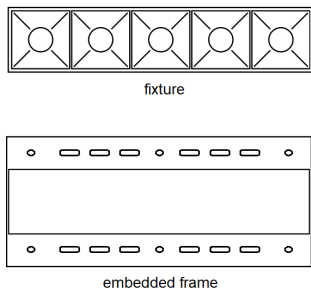


# \*\*\*INSTALLATION MANUAL\*\*\*

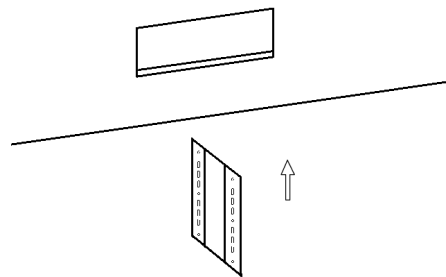
## Safety tips before starting

- \*Let always an expert/authorized technician make the installation.
- \*Before you start please shut off the power to prevent electric shock.
- \*The products with energetic class II do not require the Earth / Ground connection so please do not connect the neutral if is not required. Instead, if the item is class energetic I, please do connect the neutral to Earth.
- \*Consider always to leave some space for the heat sink of the led device, it need it to cool down after use
- \*Do not connect any Led device without its recommended driver
- \*Your individual product may vary from the design shown in the pictures
- \*Do not disassemble your product
- \*If any modification is made in the item or any wrong installation cause any damage to it, the warranty will be invalidated.

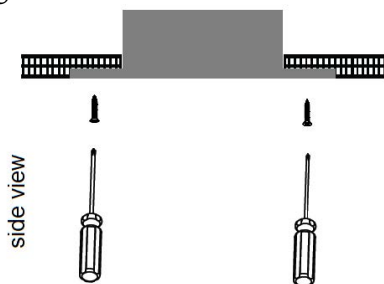
### 1. open the item box and check the components



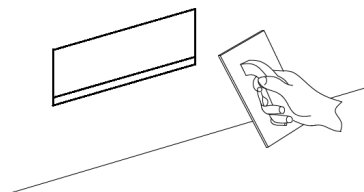
### 2. prepare the ceiling with proper cut out and position the embedded frame



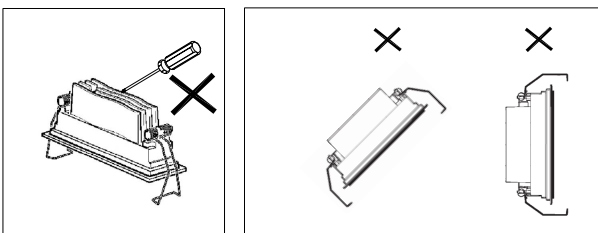
### 3. secure the embedded frame into the ceiling hole



### 3. refine the ceiling finish and paint on the area



## Additional tips on the item's installation

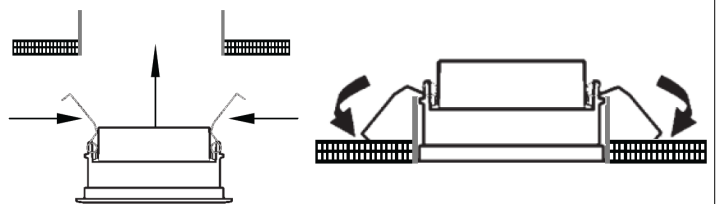


X1 - do not take apart any piece of the lamp's internal structure in at anytime

X2 - do not install in sloping ceiling

X3 - do not intall in the wall

### 5. press the clips on the fixture's side as shown from both sides and put the lamp into the ceiling hole



**Thanks for your purchase !**