

**Objective**

Ideal choices of size and design, this range is suitable for every wall. The high quality of the raw materials ensures high resistance to dust, extraneous corps in general, humidity and water. The LED system is highly efficient to provide excellent luminous flux results in low consumptions. The item presents also features as easy installation and low maintenance requirements. Plus screw less frame.

**Obiettivo**

Scelte ideali di dimensioni e design, questa gamma è adatta a ogni parete. L'alta qualità delle materie prime garantisce un'elevata resistenza a polvere, corpi estranei in genere, umidità e acqua. Il sistema LED è altamente efficiente per fornire un flusso luminoso eccellente con bassi consumi. L'articolo presenta anche caratteristiche quali facilità di installazione e scarsa necessità manutenzione.

**Description**

**Housing** - Die cast aluminium solvent free powder coated with choice of RAL colors

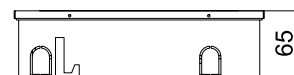
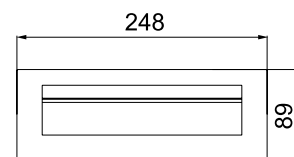
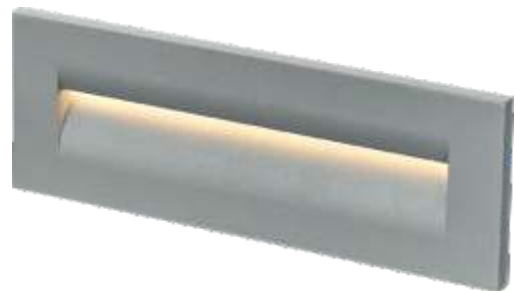
**Diffuser** - Polycarbonate optical lens

**LED** - reducing energy consumption with L80/B10/F10 50,000 hrs lifetime.

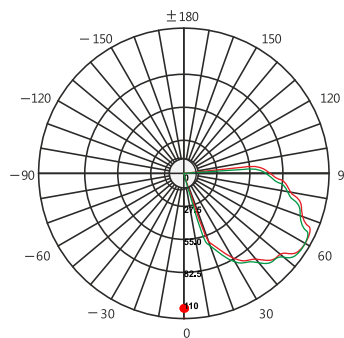
**Standards** - manufactured in accordance with tested as per PTPS IEC 62722, EN 60598-1

**Accessories** - Supply with PVC box for recessed wall mounting.

CODE	WATTAGE	LUMEN	SIZE mm	
1511410	10W	1200lm	248 X 65 X 89H	242 X 75 X 83H



55°C	Glowing Wire Test - 850°		
-25°C	IP 65	IK 08	UGR <19
	SDCM 2.0/3.0	COMPLIANCE LM-79 TM-21 (lm-80)	
		PASEL ACCREDITATION	
	SMD	CRI >90	
	SELV		series wiring
<b>A++</b>	85~265V 50/60Hz		



- 2700K
- 3000K
- 4000K
- 5000K
- 6000K
- 6500K



LED Drivers - PHILIPS TRIDONIC | LED Chips - BRIDGELUX PHILIPS

In a continuing effort to offer the best product possible, we reserve the right to change, without notice, specifications or materials that in our opinion will not alter the function of the product. Specification sheets found at [www.romaluce.it](http://www.romaluce.it) are the most recent versions and supercede all other printed or electronic versions.