

**Objective**

Sonia adopts high efficiency SMD LED system, to guarantee high lumen results, and polycarbonate diffuser, to keep the glare effect to the minimum. The luminaire comes with high performance LED driver with Triac dimmable function, 120° wide beam angle and weather proof IP 65 structural body. The minimal design and the soften angles in the square shape options are providing a good looking item. Application: Suitable for commercial and residential applications like office, supermarket, shop, school, hotel, restaurant, home.

**Obiettivo**

Sonia adotta un sistema di LED SMD ad alta efficienza, per garantire elevati risultati in lumen, ed un diffusore in policarbonato, per tenere l'effetto abbagliamento al minimo. La luminaria è dotata di un driver LED ad alte prestazioni con la funzione Triac dimmerabile, un ampio angolo di emissione di luce a 120° e la struttura IP 65 a prova di condizioni meteorologiche avverse. Il design minimal e gli angoli arrotondati nell'opzione di forma quadrata danno vita a un articolo di bell'aspetto. Impieghi: adatta per applicazioni commerciali e residenziali come uffici, supermercati, negozi, alberghi, ristoranti, case.

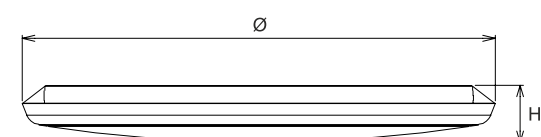
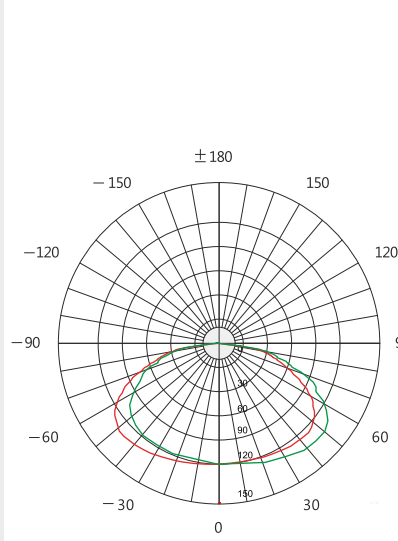
**Description**

- Housing** - Vandal resistant and V2 self extinguishing polycarbonate UV stabilized.
- Diffuser** - Anti glare with UV polycarbonate diffuser V2 resistant.
- Reflector** - Polished aluminum back reflector.
- LED** - reducing energy consumption with L80/B10/F10 50,000 hrs lifetime.
- Standards** - manufactured in accordance with tested as per PTPS IEC 62722

CODE	WATTAGE	LUMEN	SIZE mm
5591312	12W	1320lm	Ø250 X 40 H
5591318	18W	1980lm	Ø300 X 40 H
5591325	25W	2750lm	Ø350 X 40 H
5591330	30W	3300lm	Ø400 X 40 H



LED			
PHASE DIMMING	ENERGY STAR	ECO	
65°C	Glowing Wire Test - 850°		
-20°C	IP 65	IK 09	UGR <19
			SDCM 2.0/3.0
CIDET	EAC	COMPLIANCE LM-79 TM-21 (LF-80)	
PASEL ACCREDITATION	SMD	CRI >90	
ROHS	SELV	F	series wiring
CE	COMPLIANCE	U	
A++		85-265V 50/60Hz	



120°

TRIO  
3000K  
4000K  
6000K

LED Drivers - PHILIPS GTCI TRIDONIC LED Chips - BRIDGELUX CREE SHARP SAMSUNG PHILIPS CITIZEN

In a continuing effort to offer the best product possible, we reserve the right to change, without notice, specifications or materials that in our opinion will not alter the function of the product. Specification sheets found at [www.romaluce.it](http://www.romaluce.it) are the most recent versions and supercede all other printed or electronic versions.